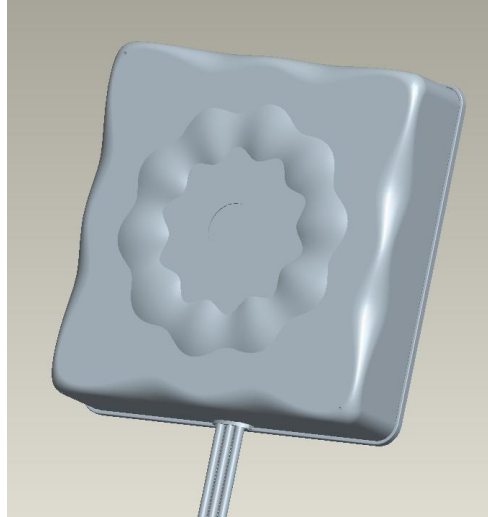
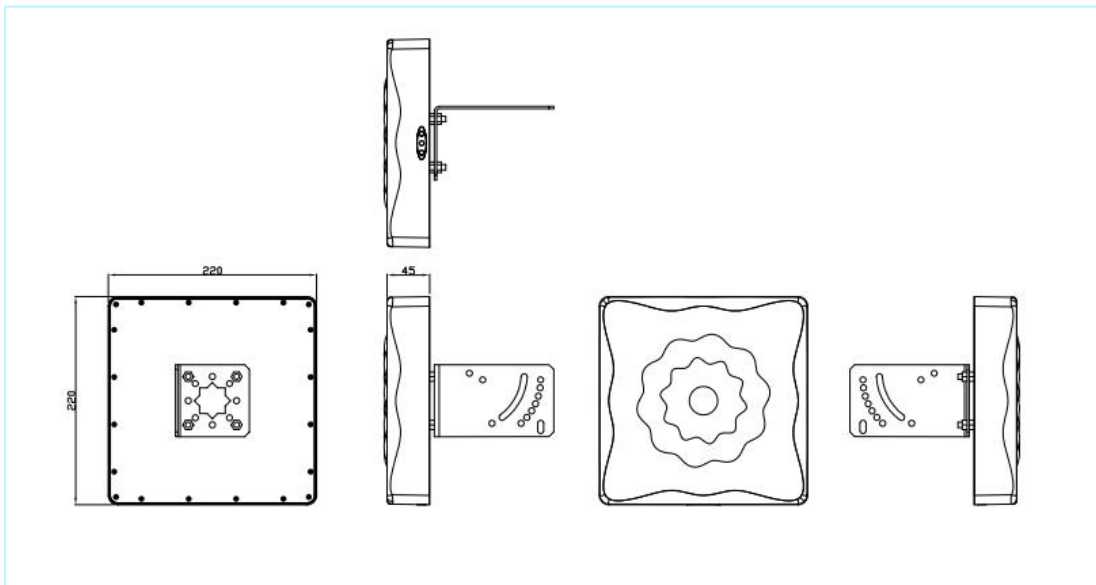


# Maswell 5G/4G/LTE Panel Antenna single lead

AN\_Master\_001-1



## Mechanical dimension



# Maswell 5G/4G/LTE Panel Antenna single lead

AN\_Master\_001-1

## Specifications

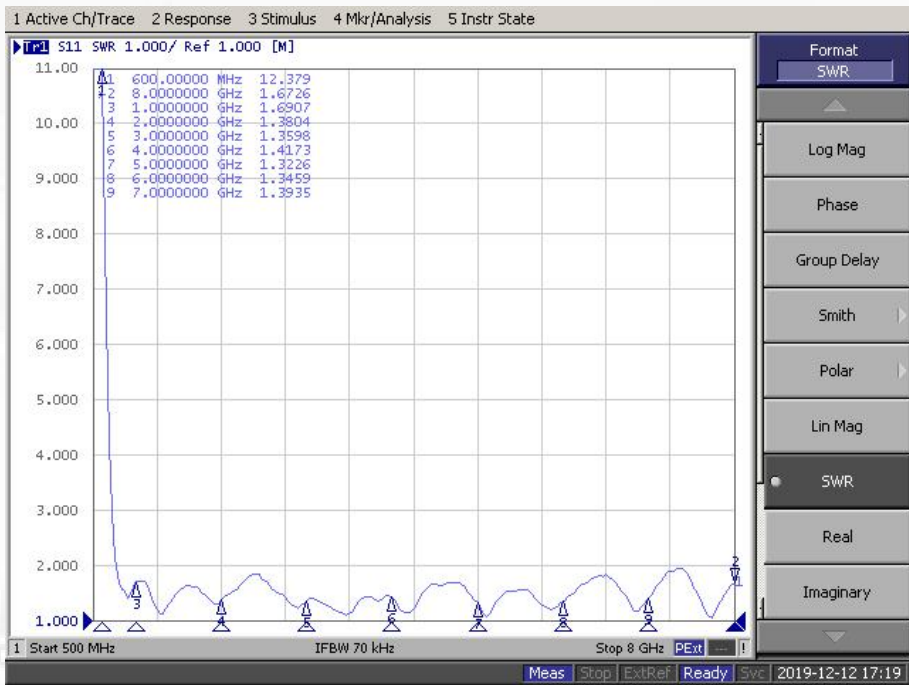
| Item          | Specifications           |   |
|---------------|--------------------------|---|
| Antenna       | Center Frequency         | 600-6000MHz                               |
|               | Polarization             | Linear                                    |
|               | Gain                     | 6.0dBi                                    |
|               | V.S.W.R                  | <2.0                                      |
|               | Impedance                | 50Ω                                       |
| Mechanical    | Dimension                | 22cm*22cm*4.5cm                           |
|               | Cable                    | Customizable                              |
|               | Connector                | SMA or others                             |
|               | Mounting Method          | Magnet/Adhesive/Screw                     |
| Environmental | Operating Temperature    | -40°C~+85°C                               |
|               | Vibration                | 10 to 55Hz with 1.5mm amplitude<br>2hours |
|               | Environmentally Friendly | ROHS Compliant                            |

- ◆ Support all 5g, 4G, 3G, GSM and dual band WiFi bands in the world!
- ◆ Single antenna meets all wireless protocol needs, no need to buy other antenna!
- ◆ Up to 6dbi gain for various signal transmitting and receiving scenarios!

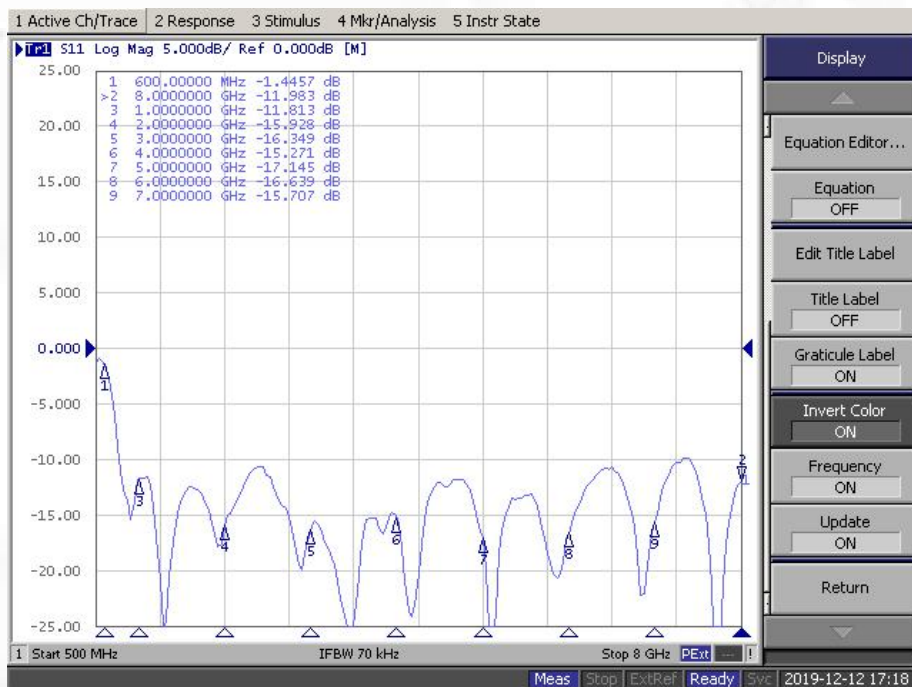
# Maswell 5G/4G/LTE Panel Antenna single lead

AN\_Master\_001-1

## Experimental results:

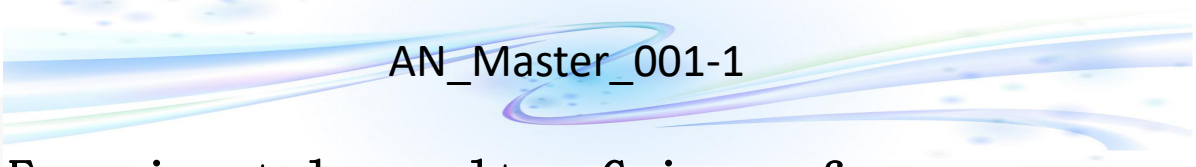


Measured VSWR

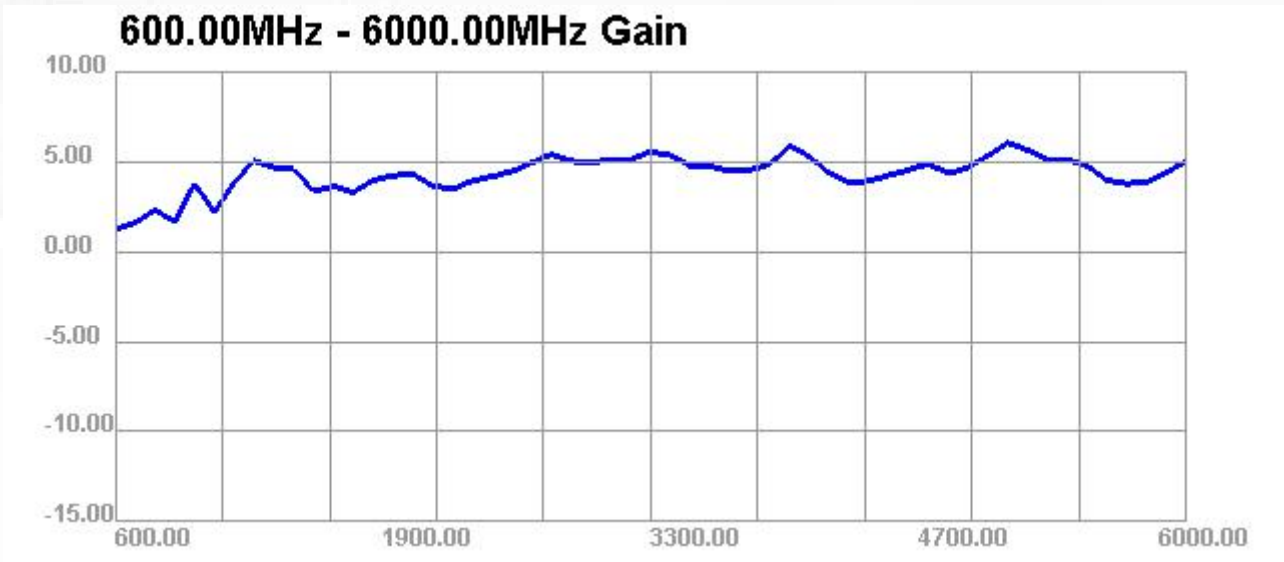


Measured S11

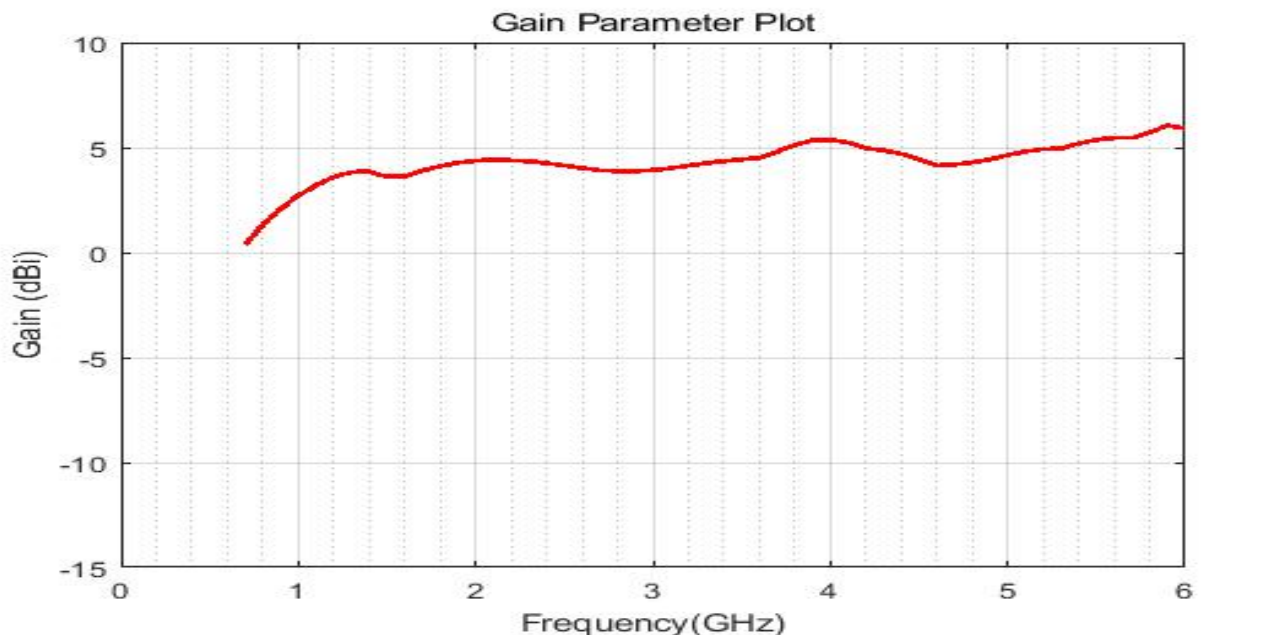
# Maswell 5G/4G/LTE Panel Antenna single lead



Experimental results: Gain performance



Measurement gain curve



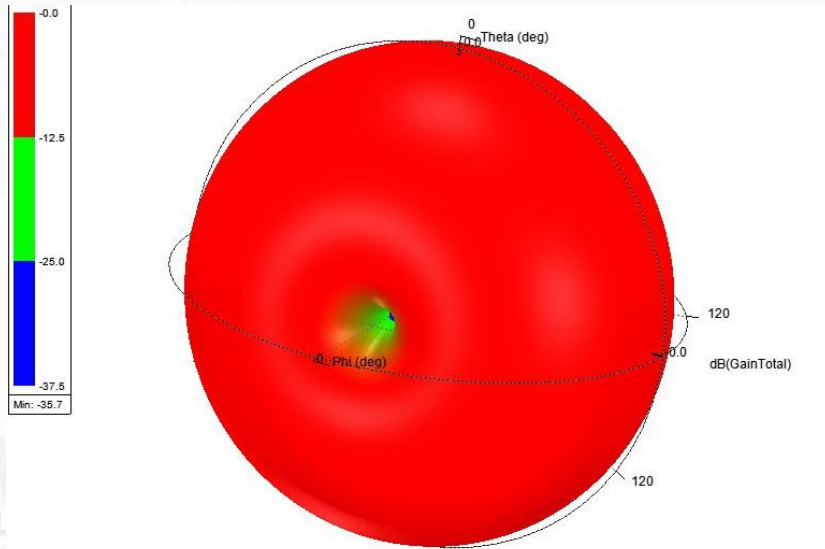
Simulation gain curve



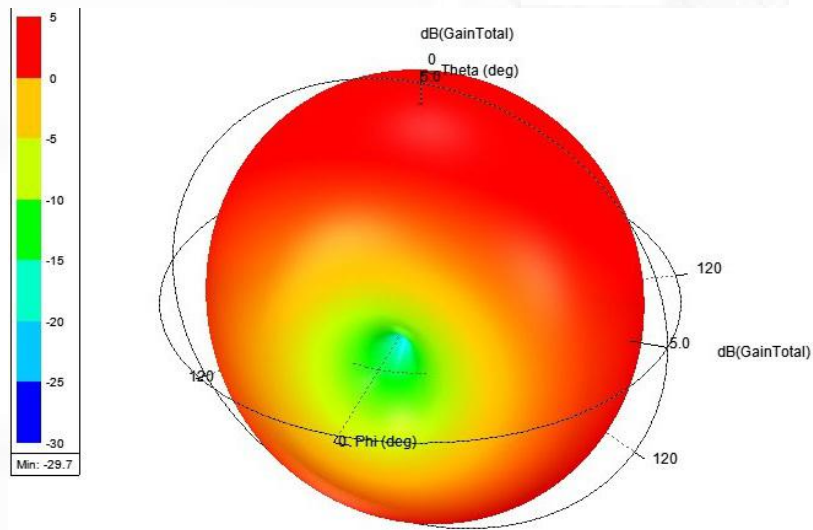
# Maswell 5G/4G/LTE Panel Antenna single lead

AN\_Master\_001-1

Radiation pattern: low frequency



600 MHz

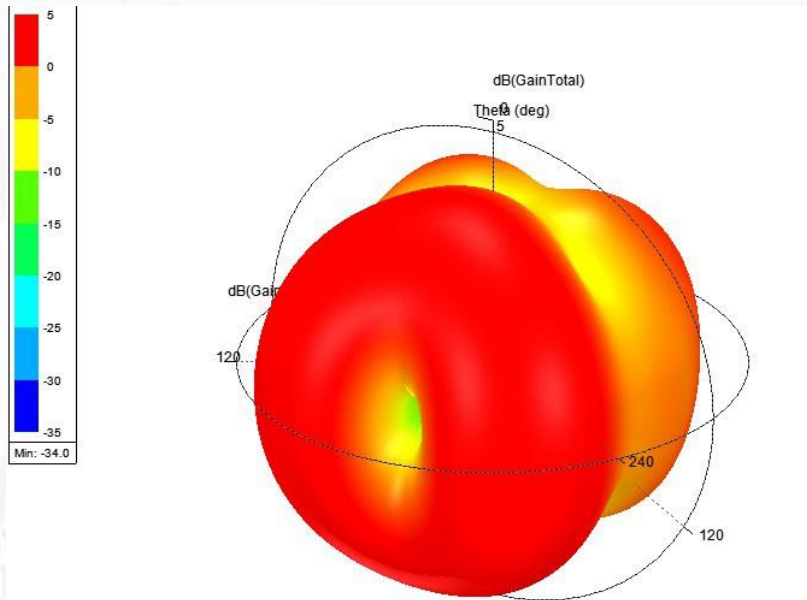


900 MHz

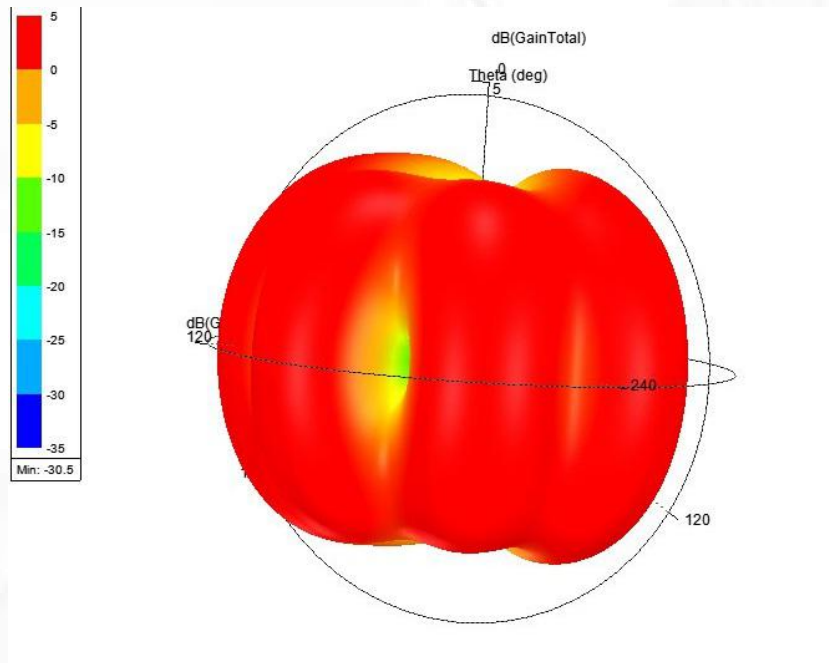
# Maswell 5G/4G/LTE Panel Antenna single lead

AN\_Master\_001-1

Radiation pattern: intermediate frequency



1.8 GHz

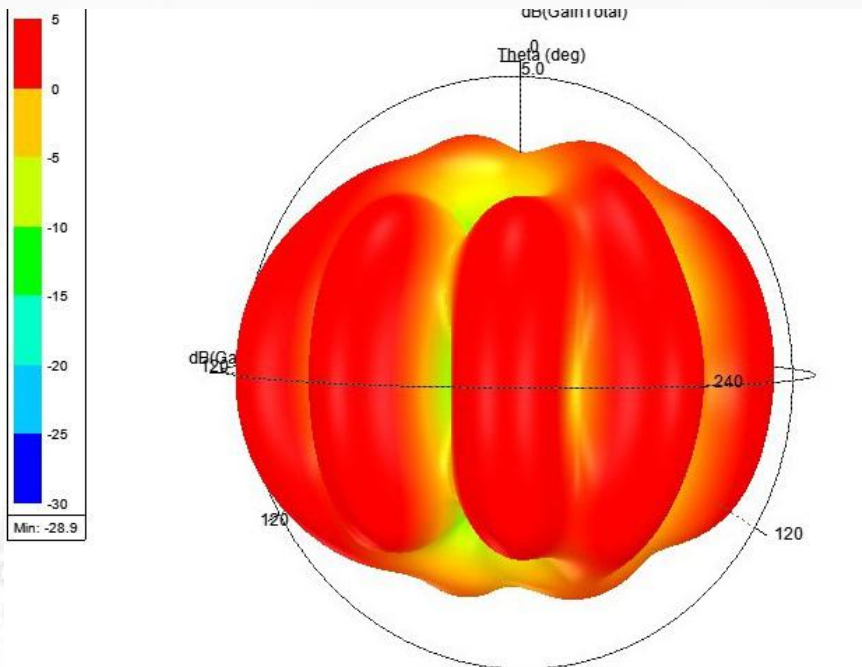


2.6 GHz

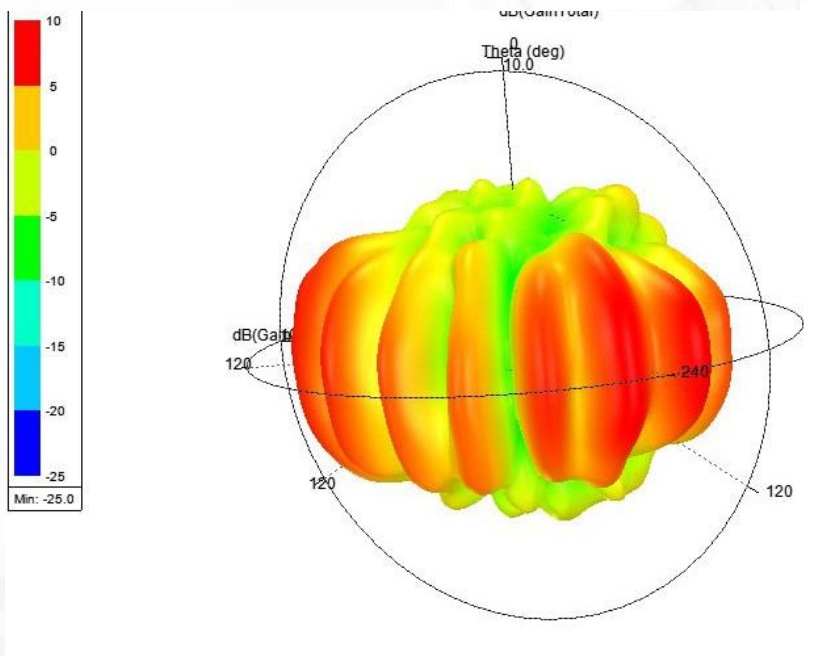
# Maswell 5G/4G/LTE Panel Antenna single lead

AN\_Master\_001-1

Radiation pattern: high frequency



3.5 GHz



5.8 GHz